



Medical Travel To Turkey As An Option for Insured Members, Employers, and U.S. Payers

David Boucher, MPH, FACHE
President and Chief Operating Officer
April 16, 2009



The Perception of Care Abroad



The Reality of Care in Turkey



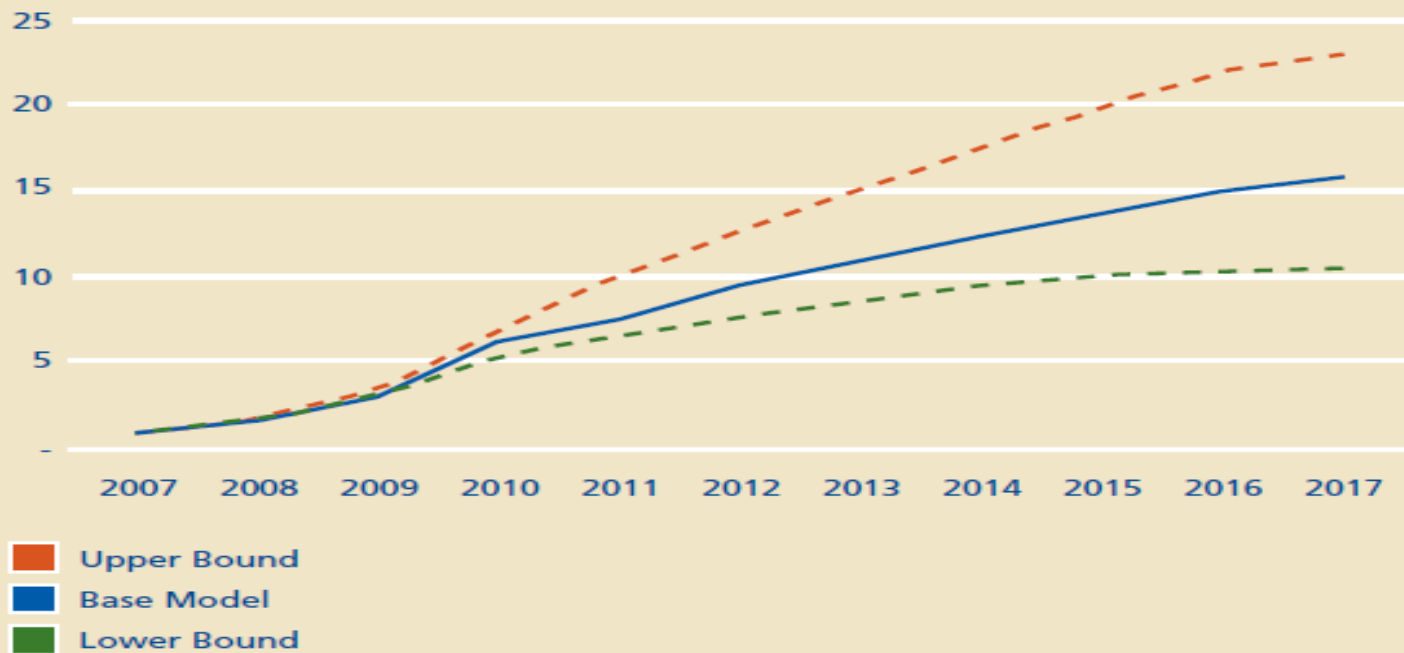
Anadolu Medical Center,
Istanbul



Kent Hospital,
Izmir

Projected Outbound Patient Flow

Figure 2: U.S. Outbound Patient Flow, 10-Year Projection (millions)



Assumptions

- In 2007, approximately 750,000 Americans traveled outbound for medical care. That number will increase to six million by 2010.^{1,2} Therefore, the growth rate from 2007 to 2010 is 100 percent for the base case estimate.
- After 2010, the growth rate will begin to fall due to supply capacity constraints in foreign countries.
- Upper/Lower bound estimates assume the growth rate is higher/lower than the base case estimate.

Source: Internal Deloitte Analyses

The Perfect Storm.....

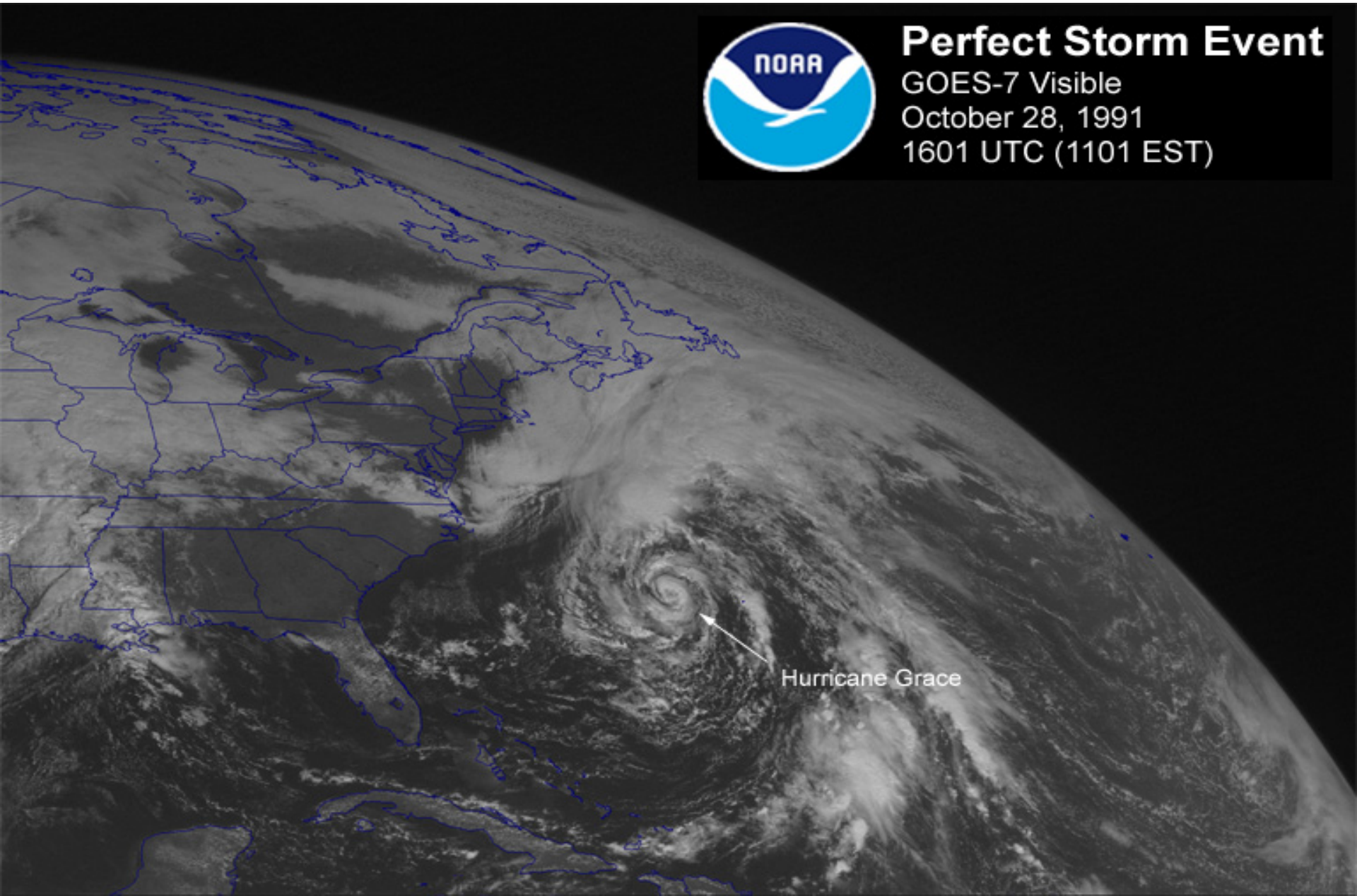


Perfect Storm Event

GOES-7 Visible

October 28, 1991

1601 UTC (1101 EST)



Hurricane Grace

Actions Required For Turkish Medical Travel To Flourish

- Employer Benefit Changes In The U.S.
- Comparable Outcomes Data
- “Settle” Liability Coverage Topic
- Improve Continuity of Care Services

Introducing:



Companion
Global Healthcare, Inc.

- **A Network of JCI Accredited, Lower Cost Hospitals in Overseas Locations**
- **Concierge Travel Arrangements**
- **Case Management**
- **Aftercare Services**
- **Related Medical Travel Insurance Products**

Transparency is the Underlying Theme of CGH's Web Site



PATIENTS

GROUP LEADERS

AGENTS

ABOUT

NEWS

CONTACT

Discover

the advantages of health care overseas
from the **Companion you trust.**



- Procedures Usually Cost Significantly Less
- Credentialed Providers
- Round-trip Customer Service



Get Your Smile Back!
Companion Global Dental

Enjoy amazing savings on a wide variety of procedures, including crowns, veneers, implants, bridges and more.

» **MORE**



Need a Surgical Procedure?
Find out what's available

Take advantage of significant savings on common health procedures, without sacrificing service. » **MORE**

Angioplasty

Current Business Models

- *Employer Direct*
- *Third Party Administrator (TPA) Direct*

Companion Global Healthcare Pre-Travel and Post-Surgical Consultations Available Through Doctors Care.



**Thomas E. Gibbons,
Columbia, SC**



**Steve Parks, MD
Greenville, SC**



**Ronald K. Reynolds, MD
Myrtle Beach, SC**

Related Medical Travel Insurance Products Through



- Employer-Sponsored, Member-Centric Medical Travel Insurance
- Employer E&O Coverage Specific to Benefit-Directed Medical Travel



Companion
Global Healthcare, Inc.

Questions?